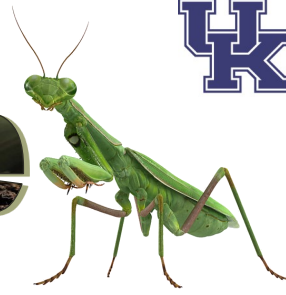


Boone County Horticulture

September-October 2022 Newsletter



University of Kentucky
College of Agriculture,
Food and Environment
Cooperative Extension Service

Cooperative Extension Service
Boone County
P.O. Box 876
Burlington, KY 41005
(859) 586-6101
Fax: (859) 586-6107
boone.ca.uky.edu

Fall is for Planting

By David Koester
Boone County Extension Agent
for Horticulture

Sales receipts from nurseries and garden centers prove that the overwhelming number of homeowners purchase trees and shrubs for planting in the spring rather than fall. Following a long winter it's natural to want to get outside and welcome spring with new plants. There's nothing wrong with this practice but it doesn't take advantage of another planting season that offers many advantages over spring planting.

Fall is an excellent time to plant. The fall season usually provides three months of suitable weather for planting while spring renders only two months. Frequent spring rains can leave soils too soggy to dig. Fall precipitation on average is always less than in spring.

Plants are becoming dormant in the fall so they are losing less water through their leaves. Fall plantings are less likely to experience stress so more energy is directed to root production. Roots continue to grow anytime soil temperatures remain above 40 degrees. These soil temperatures occur the majority of the winter. Plants established in the fall have root systems better able to withstand high summer temperatures and less rainfall.



(Continued)

Quick TIP

Early September is a good time to plant spinach. Fall-planted spinach won't "bolt" and go to seed. The smaller plants will survive a mild winter to become an early crop next spring.

Cooperative Extension Service
Agriculture and Natural Resources
Family and Consumer Sciences
4-H Youth Development
Community and Economic Development

Educational programs of Kentucky Cooperative Extension serve all people regardless of economic or social status and will not discriminate on the basis of race, color, ethnic origin, national origin, creed, religion, political belief, sex, sexual orientation, gender identity, gender expression, pregnancy, marital status, genetic information, age, veteran status, or physical or mental disability. University of Kentucky, Kentucky State University, U.S. Department of Agriculture, and Kentucky Counties, Cooperating.
LEXINGTON, KY 40546



Disabilities
accommodated
with prior notification.

As a general rule deciduous plants are more suitable for fall planting than evergreens. All of the same rules apply to fall planted trees and shrubs as those planted in spring.

Dig a wide planting hole but no deeper than the root ball or container. Water will need to be applied at planting and at least once weekly until mid November. Mulch plants after watering. No more than 2.5 inches of mulch should be applied and do not put it against the trunk.

If you're planting container plants check the root system for girdling roots. If the root ball is tight and the roots are to the edge of the container and circling, gently pull the roots outward.

Another bonus of fall planting means you support the pollinators with food and habitat at the beginning and end of the season. Your fall-planted perennials will provide sustenance and cover in late fall and emerge early in spring to support pollinators like hummingbirds, bees and butterflies.

Container gardening is also much easier in fall, when you're not dealing with constant watering, deadheading and pruning. Moderate

temperatures means less stress on the plants, and more time for you to enjoy the plant combinations you create. With the right plant mix, you can keep a container going from fall to spring.

You have several opportunities to learn about fall planting and selecting the best plants for our area.

Fall is for Planting Classes

- ▶ September 19, 6:30-7:30pm • Florence Library
- ▶ October 3, 6:30-7:30pm • Walton Library

Must register through the Boone County Library website.

<https://boone.libnet.info/event/6597123>

There is an excellent opportunity for you to select and purchase quality plants at one site if you attend the **Boone County Arboretum Plant Sale September 17** from 9am to 2pm at Ammon Nursery. The best Nurseries in Kentucky and Cincinnati are bringing their stock to this sale. Nursery experts will be on hand to answer questions and help you with your selections. All proceeds benefit the Friends of the Boone County Arboretum.



Quick TIP

Wait until trees and shrubs are fully dormant before fertilizing. This is usually between Thanksgiving and Christmas. Fertilizing too early in the fall encourages "soft" growth going into winter, since fertilizing puts the tree in a "growth" mode.

Northern Kentucky Master Gardener Program



Wednesdays—10:00 a.m.—2:00 p.m.

Dec. 7, 2022 thru Mar. 29, 2023

Cost: \$150.00

*\$50 refund if your volunteer hours are
completed within one year.*

**For more information about this
15-week course or to register,
call (859) 356-3155**

Registration deadline: Oct. 17, 2022

Join other gardeners for this 15 week volunteer training program. Subjects include botany, tree identification, soils, propagation, disease and insect identification and much more. Complete the program requirements, then use your new knowledge by volunteering 40 hours at Extension-approved sites in order to become a *Certified Master Gardener*.



Physical classes will be held at the Kenton County Extension Office at 450 Kenton Lands Road in Erlanger, KY. A hybrid online/in-person program option is available but limited!

**The physical location is limited
to 48 participants per class.**



University of Kentucky
College of Agriculture,
Food and Environment
Cooperative Extension Service

Quick TIP

Fall is the ideal time to fertilize lawns. Soil test now, so you'll know what type of fertilizer to buy. Sample new seedbeds to a depth of 4 inches, and established lawns to a depth of 2 inches.

Fall Lawn Overseeding

*By Joe Smith
Boone County Extension
Horticulture Technician*



There are two periods each year that are ideal for overseeding a lawn with cool season grasses in Northern Kentucky—spring (early March to late April) and fall (late August to early-October).

Most overseeding is done in the spring when homeowners see the damage to their lawns at the end of a long winter. Consequently, at this time they are more motivated to improve the lawn by overseeding or total renovation of their turf.

Still, early fall is by far the very best time to overseed, when the air temps are cooling down, but the soil still remains warm. Weed growth also begins to slow down in the fall, so your new grass won't have to compete for sunshine, water and nutrients. The new grass will also have the benefit of an extended period of time to establish itself before the heat and drought of the next summer.

Also, remember to choose a good quality mix of turf type tall fescues for your overseeding projects. The tall Fescue seed mixes are by far the superior cool season grass for our area and require far less water and maintenance than perennial rye or bluegrass mixes.

Turf Care Calendar for Cool-Season Lawns in Kentucky

Management Practice	JAN	FEB	MAR	APR	MAY	JUN	JUL	AUG	SEP	OCT	NOV	DEC
Aerify ¹			■	■	■							
Lime ²	■	■	■	■	■	■	■	■	■	■	■	■
Mow ³												■
Mower maintenance ⁴	■		■				■					■
Nitrogen fertilization ⁵			■	■	■				■	■	■	■
PRE-herbicides for annual grassy weeds ⁶			■	■	■							
POST-herbicides for annual grassy weeds ⁷					■	■	■	■				
POST-herbicides for broadleaf weeds ⁷			■	■	■				■	■	■	■
Seeding for renovation or initial establishment ⁸		■	■	■	■				■	■	■	
Sodding ⁹		■	■	■	■	■	■	■	■	■	■	■
Curative white grub control ¹⁰								■	■	■		
Preventive white grub control ¹⁰					■	■	■					

Note: Cool-season lawns include Kentucky bluegrass, tall fescue, fine fescues, and perennial ryegrass.

■ Best time to perform activity
 ■ Second-best time to perform activity
 □ Do not perform activity

Amsonia hubrichtii

*By Joseph Morgan
Boone County Extension
Horticulture Technician*



Thread leaf Amsonia is a widely available yet underutilized plant in Northern Kentucky landscapes. Named after Mr. Leslie Hubricht, it was first collected and correctly identified in Arkansas in 1942. While it is a true Midwest native, we do not see it growing wild here in Kentucky as its range is limited to Oklahoma and Arkansas. Amsonia provides interest year-round, wispy foliage emerges in spring followed by small blue star shaped

flowers in late spring through early summer. Most notable is its stunning fall color. A large flowering mass of ambers, yellows and purples comes unmatched by other perennials. Plant evaluations at the Chicago Botanical Gardens rate the species hubrichtii and 'blue ice' as the single best varieties to plant.

A huge benefit of this plant is its low maintenance nature, aside from being cut back in late fall or early winter, no deadheading or supplemental care is required. Amsonia is relatively slow growing and should not



be split until it has been established for several years. Not only is it relatively hands off, it is also tough. Sandy and clay soils are both suitable growing environments if full sun is provided and the soil is not routinely waterlogged. Care should be taken while cutting back Amsonia as the white sap excreted by stems has been known to irritate sensitive skin.

Overall, Amsonia is certainly a plant worth considering for your garden. Whether you prefer a formal or informal setting, you can expect reliable performance and striking appearance from this slow and

steady plant.



Use mole traps, set from 4 to 6 PM, to catch moles. First, tramp down a spot in their runway to make sure it's an active runway. If it is, it will be pushed back up and repaired within 12 to 24 hours. If you don't catch a mole within 3 days, move the trap to another runway. Mole-Med and Mole Exit, both mole repellents, may also be effective. Also the gummie worm products, like "Tomcat Mole Killer", which contains Talpirid has also shown good results in some studies.

Quick TIP

Boone County Fair Great Pumpkin Contest!



The Results Are In!



Class 066	Largest Pumpkin by Weight	1st Place	Daniel Zembrodt
		2nd Place	Gus Zembrodt
		3rd Place	Pony Palace Pumpkin Patch
Class 067	Best Quality Jack O'Lantern Under 15 lbs.	1st Place	Kinley Walters
		2nd Place	Brantley Kafka
		3rd Place	Angie Jones
Class 068	Best Quality Jack O'Lantern Over 15 lbs.	1st Place	Sara Walters
		2nd Place	Kinley Walters
		3rd Place	Gabe Huff
Class 069	Most Unusual Specialty Pumpkin/Gourd	1st Place	Pony Palace Pumpkin Patch
		2nd Place	Gabe Huff

Congratulations! Thanks for Participating!

For More Information...

For more information or to register for any of our classes, visit our website at boone.ca.uky.edu.
Click "Online Class Registration" or call us at 859-586-6101.

Upcoming Horticulture Events *Please Register!*

Growing Figs in Northern Kentucky

► September 15, 10am-12pm
Enrichment Center-Project Room
Yes, figs will grow in Kentucky!
Join us for tips on growing them outdoors in Northern Kentucky. Cultivar selection, winter protection techniques and propagation will be covered.

Horticulture Advisory Council Meeting

► September 22, 10am-1pm
Enrichment Center-Lower Level
Do you have any ideas or suggestions for horticulture classes or programs for 2023? Join us for an informal discussion to plan out our classes for the upcoming year

Landscaping with Native Plants

► October 10, 10 am-12pm
Enrichment Center-Project Room
Tired of exotic invasives wrecking your landscape? Join us to discuss some great native alternatives that will beautify the home landscape.

Skinny Trees for Skinny Spaces

► October 18, 1:30am-3:30pm
via Zoom (Must register to received Zoom link.)
Learn about some great tough and adaptable columnar trees suited for landscapes with specific site limitations.

Fall is for Planting

► September 19, 6:30-7:30pm
Florence Library

► October 3, 6:30-7:30pm
Walton Library

✔ **Must register through the Boone County Library website.**
<https://boone.libnet.info/event/6597123>

How We Interact With Our Plants

During the Victorian era, people often gave each other flowers and used the "language of flowers" (sometimes called *floriography*) to express feelings. Books listed flowers in alphabetical order alongside their illustrations and meanings. The flowers said it all. Each flower, herb, and vine had a special meaning, and it was important to carefully choose those that best conveyed just the right sentiments. The Victorian recipients would calmly sit down and thumb their flower dictionaries, looking for a coded message within the blooms. We still 'Say it with flowers.'

Kathy LaDow, Master Gardener

Find us here...

Extension Campus Location Key:

Virtual via Zoom, Must register to receive Zoom link 🏠
Extension Service office, 6028 Camp Ernst Rd., Burlington
Enrichment Center, 1824 Patrick Dr., Burlington
Farmers Market, 1961 Burlington Pk., Burlington
Environmental and Nature Center, 9101 Camp Ernst Rd., Union
Boone County Arboretum, 9190 Camp Ernst Rd., Union; Register at: www.bcarboretum.org/

GROWING BETTER TOGETHER WITH GRANDPARENTS

University of Kentucky
College of Agriculture,
Food and Environment
Cooperative Extension Service

SATURDAY, SEPTEMBER 10, 2022

10:00 AM TO 12:30 PM

BOONE COUNTY COOPERATIVE EXTENSION SERVICE

6028 CAMP ERNST RD BURLINGTON, KY 41005



Sponsored by AARP and Prevent Child Abuse Kentucky, Growing Better Together with Grandparents is an event to celebrate grandparents and the role they play in the lives of children. Grandparents, caregivers over 50, and their grandchildren are invited to join us to spend quality time together planting a pollinator garden. The Arboretum On Wheels will also be on-site offering additional hands-on, engaging activities and lessons. Lunch will be provided.

Please register both adult and child(ren).

TO REGISTER: CALL (859)-586-6101 OR VISIT WWW.BOONE.CA.UKY.EDU



For more information or if you have questions, contact us—we are here to help!
859-586-6101 • boone.ca.uky.edu

David Koester
Boone County Extension Agent
for Horticulture
david.koester@uky.edu

Joe Smith
Boone County Extension
Horticulture Technician
joseph.smith2@uky.edu

Joseph Morgan
Boone County Extension
Horticulture Technician
joseph.morgan@uky.edu